

MODERN ARAB ENTERPRISES Co. Ltd.  
شركة الأعمال العربية الحديثة المحدودة

# COMPANY PROFILE



P.O. Box 5952 Jeddah 21432 Saudi Arabia



Tel +966 12 699 1226



Fax +966 12 694 9937



mae@mae.com.sa



operations@mae.com.sa

# About Us



Headquartered in Jeddah, Modern Arab Enterprises (MAE) was established in 1997 with a focus on building materials trade and supply.

MAE is a leading supplier of the Saudi Arabian market, providing the highest quality products for industrial, Energy, Healthcare, Tourism, Real state development sectors, etc..





# Company Strategy

**1** Deliver the highest quality products, systems & building solutions with an eye on exemplary service.

**2** Prioritize relationships with our clients and supplier and continually grow our network.

**3** Operate efficiently through cutting edge systems and inventory management and logistics.

**4** Cater to growing customers' demands and future segments.



## Vision

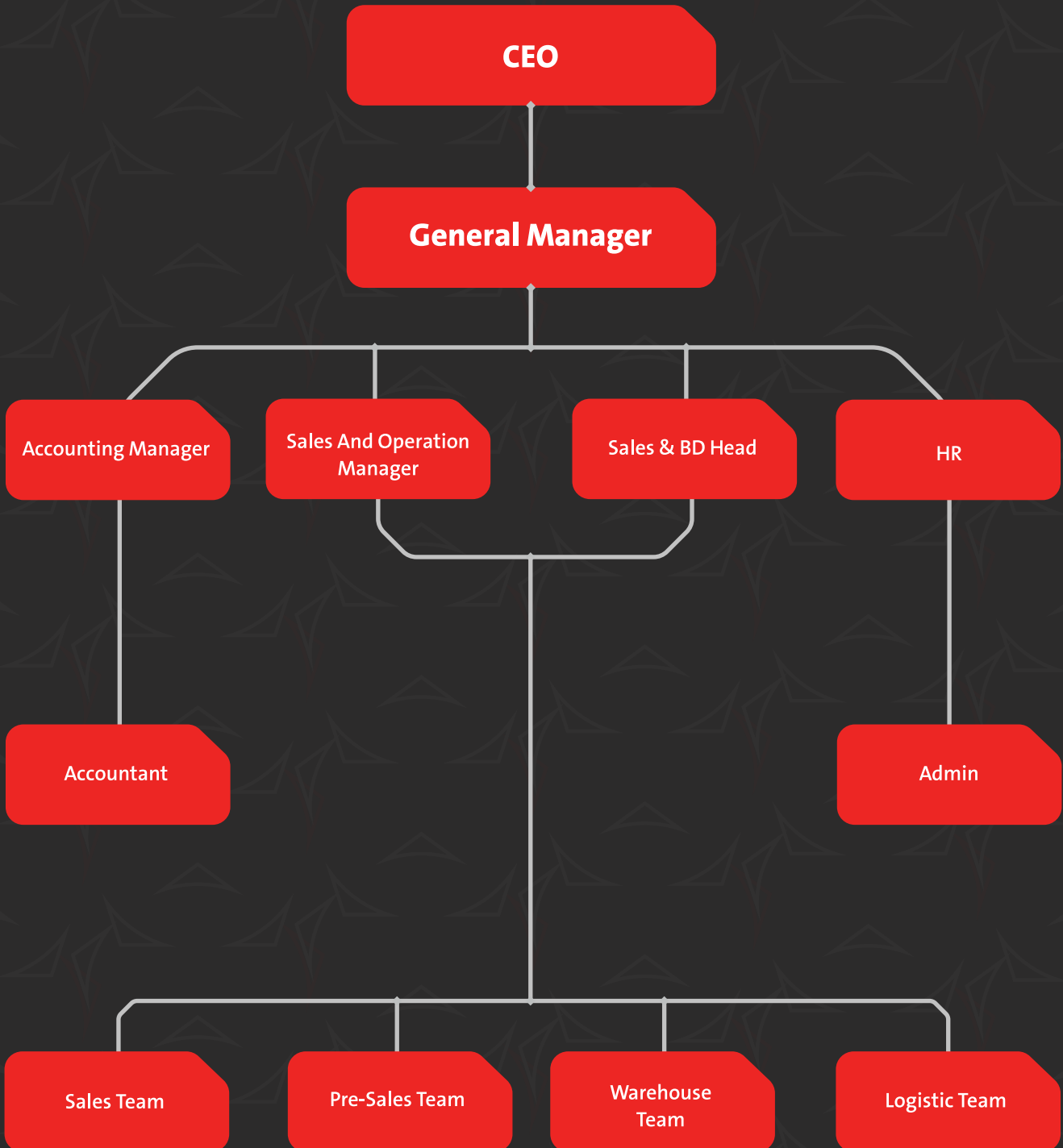
In line with Saudi Arabian VISION 2030 for sustainable and green energy, we are working on new technologies and products to serve the community and build an environment for a better life. for its citizens and residents.

We continually strive to be recognized as a trusted, unique and caring contributor for the Kingdom of Saudi Arabia.

MODERN ARAB ENTERPRISES Co. Ltd. seeks to provide its customers with the largest range of high quality materials and products.



# Company Management Structure





# **MAE Portfolio Of Work, Catalogue & Work Overview**

# Holy Haram Expansion Project



# Prophet Mosque Expansion





# King Abdulaziz International Airport (KAIA)



# King Abdullah Financial District (KAFD)



# KAUST Project



# Ummhat Island Red Sea

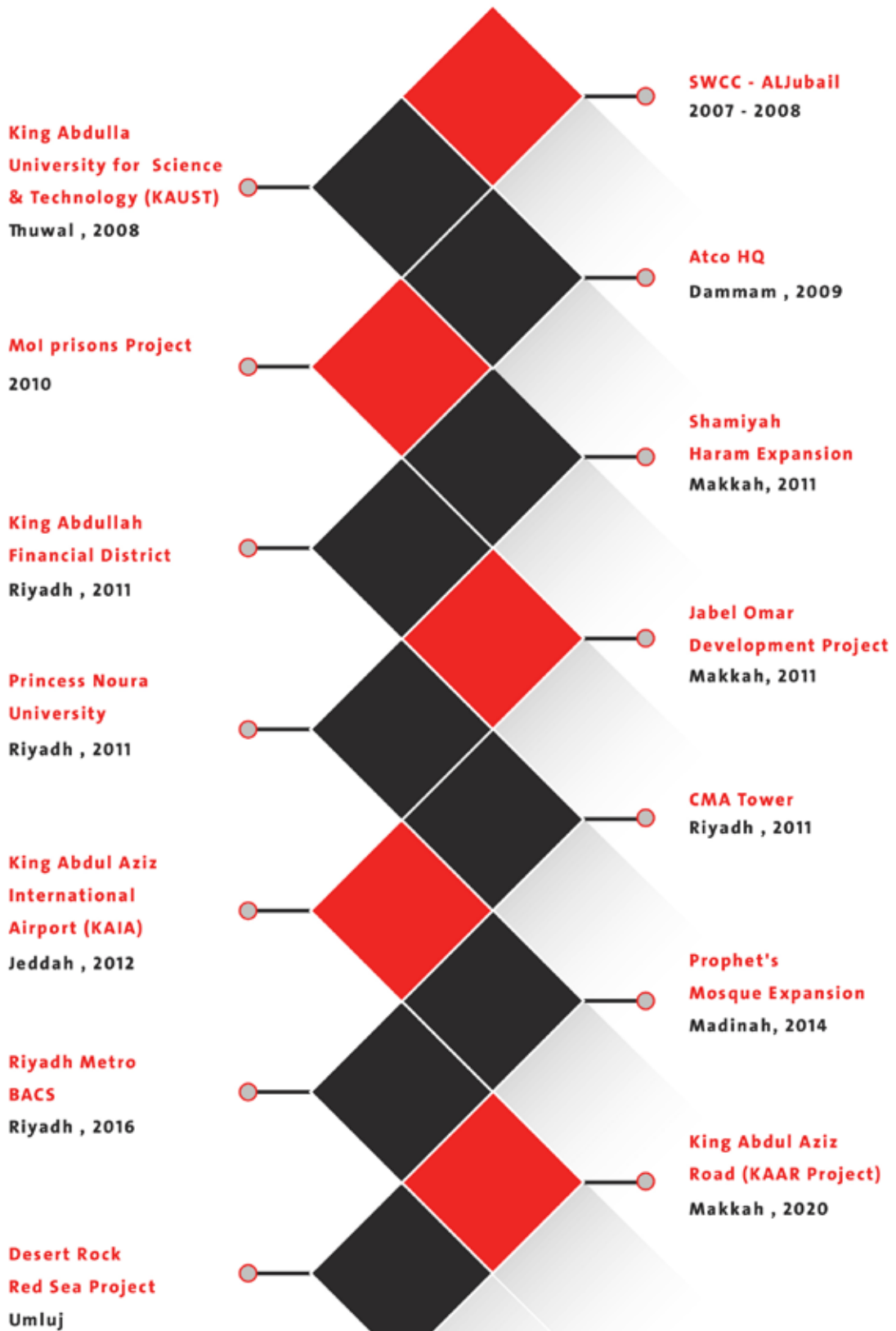


# Desert Rock Red Sea Project





# Projects Completed



# Our Vendors / Products

## Our Vendors:

1- VICTAULIC

2- WATTS

3- DANFOSS

4- VALMATIC

5- GEPICO



# VICTAULIC

Since 1919, Victaulic's innovative solutions and design services continue to increase construction productivity and reduce risk, ensuring projects are completed safely, on time and within budget. Specialized in pipe joining and flow control. Victaulic system solutions are engineered to ensure reliability and durability in every condition, no matter how extreme.

There are a wide range of product such as Valves, Couplings, Vic-Ring Couplings, Expansion Joint, Fittings, Adapter, Strainers and Diffusers, Equipment Module, Tools, Pipe Preparation Tool.



## Victaulic Grooved Product line.

1. Ductile/Cast Iron.
2. Hot Dip Galvanized.
3. Stainless Steel & Press Fit.
4. Copper.
5. Machines & Tools.

# Firefighting System

Victaulic is a designer and manufacturer of mechanical pipe connection systems for fire protection. There are several pipe joining methods employed in the construction industry today. These methods are accompanied by an overwhelming amount of resources to guide practical and sustainable piping design.

Victaulic offers a comprehensive and innovative product line designed specifically for fire protection systems. A full line of appliances, valves, couplings, fittings, flexible sprinkler fittings, whole cut products, and automatic sprinklers. A complete system solution for wet and dry pipe applications. Pipe preparation tools and supplies.

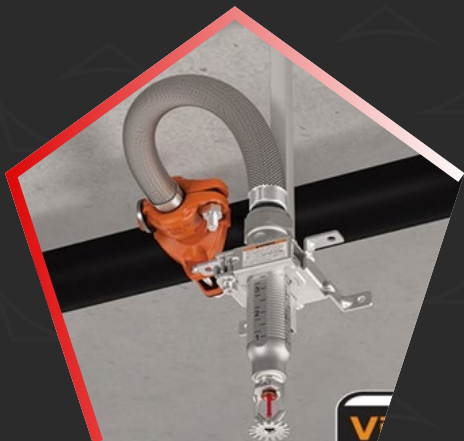
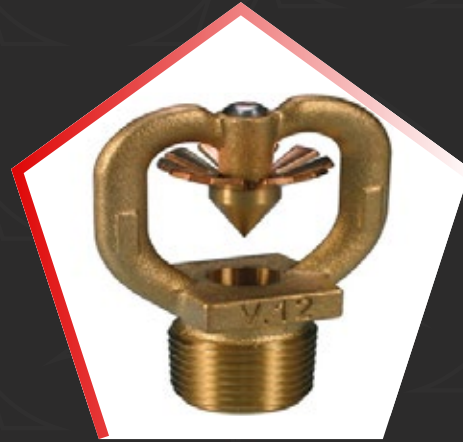
# Couplings & Fittings



# SPRINKLERS & FLEXIBLE HOSES



# SPRINKLERS & FLEXIBLE HOSES



## HVAC System

Victaulic® Grooved HVAC Piping Systems are the most versatile, economical and reliable piping systems on the market. Installs up to three times faster than welded systems. More reliable than threaded or flanged assemblies. The Victaulic approach reduces risk and overall installation costs. The system is designed for standard roll grooved pipe or cut grooved pipe or light wall roll grooved pipe. Preparing pipe ends is also quick and easy. This can be done on site or in the manufacturing shop using a range of Victaulic grooving tools.

Advanced Groove System Wide, wedge-shaped grooves facilitate precise positioning of couplings for unmatched assembly, speed, and reliability, helping contractors achieve the speeds they need and engineers need performance can be achieved.

Rubber gaskets are designed by Victaulic to reduce risk and meet end user needs. Victaulic develops elastomer formulations, designs seal geometries and manufactures unique seals. Victaulic uses product testing standards and industry specifications in addition to its own technical expertise and stringent requirements.

## Couplings



## Victaulic Rubber Gaskets

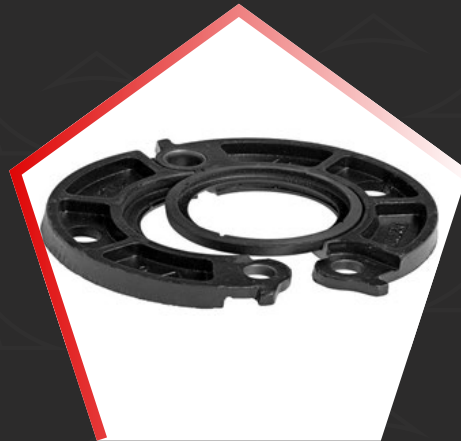


# FITTINGS





# FITTINGS



# Advanced Grooved System (AGS) Couplings & Fittings



# HVAC VALVES



## Advanced Grooved System (AGS) HVAC VALVES



## STAINERS & SUCTION DIFFUSERS



## Advanced Grooved System (AGS) Strainers & Suction Diffusers



# Galvanized Couplings & Fittings



# HVAC/Plumbing System Copper Couplings & Fittings



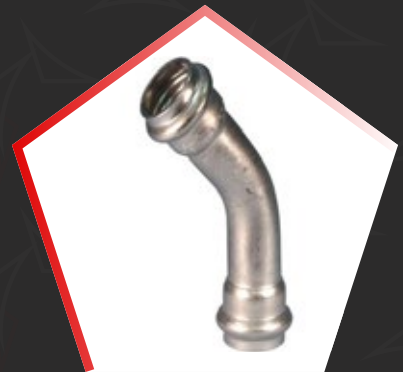
# HVAC/Plumbing System Copper Couplings & Fittings



## Stainless Steel Valve



## Stainless Steel Press Fit





## MACHINE & GROOVING TOOLS

At Victaulic, we offer cutting-edge tooling technology integrated with unparalleled service and support. Tube tip preparation should be quick, easy and mess-free. Why accept less? Victaulic's trusted technologies help reduce risk through error protection, controlled purposes, security, and intelligence. Proven performance coupled with exceptional customer support and service make Victaulic the #1 supplier of grooving and crimping tools. Victaulic is committed to meeting your needs with high quality support, service and products.

Victaulic tools are designed for light to heavy use in the field with tool parts that can be disassembled and transported to the job site, lightweight and portable tools designed for drilling holes on the pipeline to connect the service. Battery powered hand tool designed to attach Vic-Press™ Schedule 10S products to IPS Schedule 10S stainless steel tubing. Roll grooving is a method of preparing standard or light wall carbon steel pipes, stainless steel, aluminum, PVC, copper and other materials.

# MACHINE & GROOVING TOOLS





**WATTS**

The history of WATTS, dated back to 1874 in the United States, was always distinguished for its important and continuous contribute to the technological development of the market through the research and devel opment of valves and related products that became a milestone in water and HVAC installations.

# Gate Valve



Gate Valve is designed for the isolation of clean water and other non-corrosive fluids that are compatible with the material of construction. It's generally used in building services, water treatment etc.

It can be used in plumbing, HVAC irrigation, commercial and industrial application



Watts offers variety of valve sizes and valve construction materials with high end quality



# Ball Valve



Ball valves are quarter-turn valves used in residential, commercial, and institutional applications to control the on-off flow of liquids and gases. They are available in a range of sizes, materials, and connection types.



# Butterfly Valve



Butterfly valves are designed for a variety of general applications for controlling liquids, gases, and slurries. We offer wafer and lug butterfly valves in a range of sizes, performance ratings, and actuation options.



# Check Valve



Designed for use in non-health hazard cross-connections and continuous pressure applications that are subject to backpressure or backsiphonage incidents. Depending on the type of Dual Check valve, the intended applications range from residential water systems at the service entrance, fire sprinkler systems and beverage machines. Also used in applications with smaller supply lines such as laboratory equipment, processing tanks, sterilizers, dairy equipment, and small boilers.

# Strainers



Y (Wye) strainers mechanically remove solids from flowing steam, gases or liquid piping systems with the use of a perforated or wire mesh straining screen, and are used to protect equipment. From a simple low pressure cast iron threaded strainer to a large, high pressure special alloy unit with a custom cap design, we have the right product for the application. Strainers are available in a wide variety of materials and ANSI Classes.



# Balancing valve



# Pressure Reducing Valves



Pressure Reducing Valves are designed to reduce incoming water or steam pressure to a safer constant predetermined downstream level. Depending on the type of valve, the downstream pressure is established by a pressure adjustment setting on the valve or by an external sensor. Pressure Reducing Valves are utilized in residential, commercial, institutional, and industrial applications.

# Float Valves



float valves & agricultural solutions are used in commercial, industrial, and agricultural applications for controlling high capacity water flow. Float valves use a rod and float ball/element attached to a valve shutoff lever to control flow in and out of a tank, and help to ensure that tanks are refilled quickly (but not overfilled) as they are emptied. Our agricultural solutions include flow control products for automatic livestock watering, irrigation systems, and more.



# Backflow Preventers



The risks to drinking water quality from backflow contamination incidents pose a constant threat—whether they're nuisance, non-health hazards, or serious public health events. Plumbing codes mandate that potable water supplies be protected against backflow at all cross-connections. We offer the largest selection of backflow prevention solutions for any application.



# Thermostatic Mixing Valve



Mixing valves are designed to blend hot water with cold water to ensure a constant, safe outlet temperature. They are utilized in residential, commercial, and institutional applications where controlling water temperature is critical to avoid scalding, thermal shock, and Legionella growth.



# Water Hammer Arrestors



Our shock/water hammer arrestors prevent water hammer in piping systems (the cause of banging pipes), which generally results from sudden changes in flow velocity. We offer water hammer arrestors to absorb the shock, thereby eliminating noise and potential damage to the piping system.



# Automatic Air Vent



Air vents are designed for use on heating systems. Our line includes products such as high-capacity air vents that provide automatic air venting for hot or cold water distribution systems and models with a manual vent feature for fast venting of residential and commercial systems.



# Hose Bib



The hose bib is the small faucet on the exterior of your house. It's essentially an outdoor tap that allows you to run water from the inside of your house to the outside. You use this tap to attach your garden hose for many different jobs. A hose bib is also called a: Exterior faucet.





# Flow Switch



Flow switches monitor the flow of liquid in pipelines servicing heating systems, air conditioning, and processing installations to help ensure safety and protect equipment. We provide an array of accurate flow switches that can act as an automatic control or safety device by stopping motors or activating an alarm when liquid flow is low or interrupted.

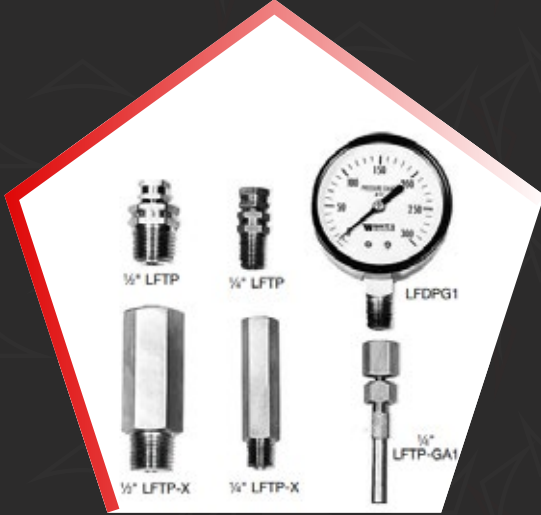
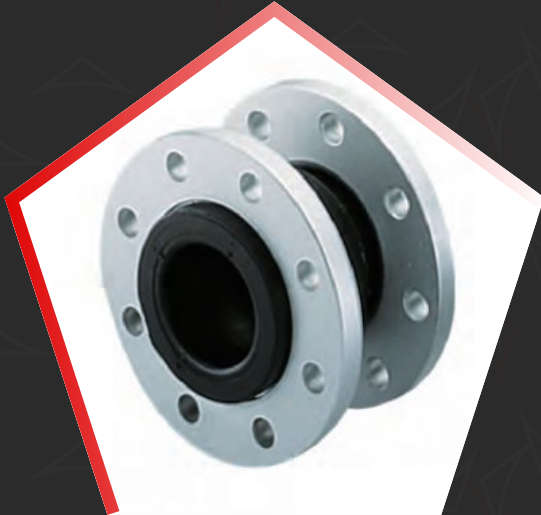
# Dielectric Unions



Dielectric Unions are used in commercial and residential applications to prevent accelerated corrosion and deterioration in the piping system due to galvanic and stray current. It is installed between pipes made from dissimilar metal. We offer dielectric unions in a range of configurations, sizes, and materials.



# Pipe Fittings & Meters



## Floor Drains



adjustable floor drains and cleanouts with patented built-in bubble level, designed for pre-pour and post-pour adjustment. Get maximum flexibility in light to medium commercial and residential applications with the complete drainage solution that ships as a fully-assembled system.



Watts cleanouts create an access point for piping inspection and maintenance. No more leaking or seized cleanout plugs, our exclusive gas-tight gasketed brass plugs hold for testing, and are easily removed and replaced.

## Roof Drains



Watts roof drains provide flexible solutions for specifiers and installers in any commercial roof application. Our exclusive dual-functional structural deck flange and combination roof drains streamline specifications, saving installation time and labor.



Our accessories for roof drains include gratings, downspout nozzles, vent caps, expansion couplings, sealing rings, stone guards, thermal insulation, and more.

## Interceptors (Grease, Oil, Sand)



Watts hydro-mechanical grease, oil, and commercial sediment interceptors protect downstream piping and wastewater treatment facilities. Our interceptors separate effluents and solids from wastewater at the source, collecting and storing the unwanted substances for later removal.



# DANFOSS

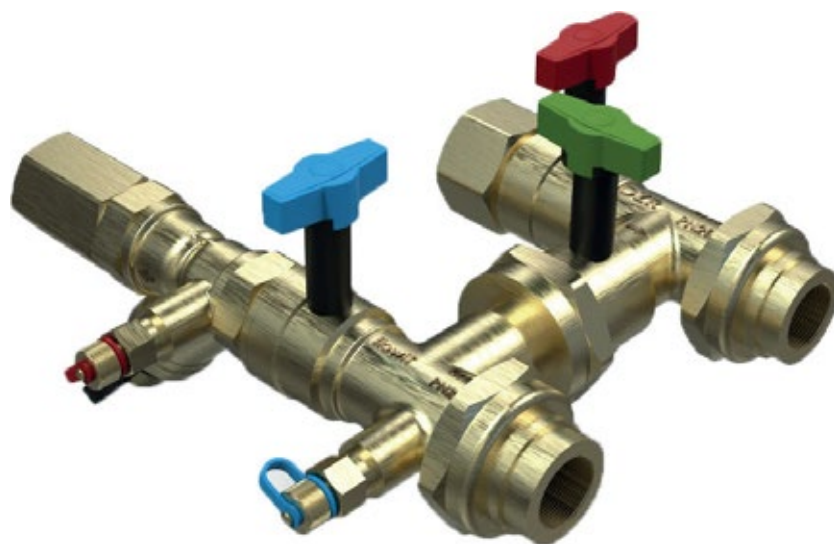
Danfoss is one of the largest industrial companies in Denmark. The global group is a leader within research, development and production, sales and service of mechanical and electronic components for several industries.



## Assembled FCU & AHU Hook-up Kits.

The Hookup kits or the FCU Links as it is called are Terminal valve assemblies have been designed to include all of the valves and connections for controlling and maintaining terminal units.

These functions are included in HVAC products, that have been designed to be assembled and mounted in the pipework to the terminal unit by the installer. Various Combinations are possible based on the Project-specific requirements.





# Pressure Independent Control Valve (PICV)



The Danfoss AB-QM is a Pressure Independent Control Valve (PICV) that combines high accuracy and durability with market leading user-friendliness. The design of the AB-QM is fully geared towards making your project run on time and on budget while delivering the most efficient HVAC system.



## Double Regulating Valve



Heating and cooling systems designed with a constant flow principle circulate large amounts of water. To do that as efficiently as possible, it is important to ensure that the design flows in the different parts of the system are correct. Manual balancing valves are the best option in these types of systems. Once installed, they can be commissioned and set to the design flow without the risk that flows will change due to partial load conditions. For a proper hydronic balance in the system, a series of manual balancing valves are installed, varying in size according to the required flow in specific parts of the system.

# Motorized Valves



Motorized Control Valves (MCV) for district heating and cooling, HVAC and central heating systems ensure stable and accurate control of water, glycol mixtures and steam. This in turn improves temperature control and reliability while increasing the energy efficiency of the system. All of which adds up to enhanced comfort for the end-user. The MCV range comprises both regular and pressure-relieved control valves designed to operate in the most demanding applications.

# Energy Meters

Energy Meter or BTU Meter is an electrical instrument that measures the amount of electrical energy used by the consumers.

Energy meters consist of the full portfolio of the primary side and secondary side ultrasonic meters for heating as well as cooling applications. They can be used in single-family houses, apartment buildings, and commercial buildings.





# VALMATIC

Val-Matic offers over 50 years of experience in providing a full line of air valves up to 20 inch and vacuum breakers up to 42 inch in size. The Val-Matic Air Release, Air/Vacuum and Combination Air Valves are manufactured in accordance to the rigorous industry requirements given in American Water works Association (AWWA) Standard C512. The standard was developed and based on decades of successful applications of air valves in our industry. Val-Matic's AWWA Air Valves feature 316 stainless steel trim, full size ports, ANSI threaded or flanged connections and stringent testing. From the float material to the shape of the body, Val-Matic Air Valves are designed for optimum performance. Val-Matic manufactures air valves in a wide range of materials and pressure ratings with many accessories including Regulated-Exhaust Devices, Dual Port Throttling Devices, Isolation Valves, Screened Hoods and Backwash Accessories. Val-Matic also provides web-based software to locate, select and size air valves for pipelines and force mains.

**Type 316 Stainless Steel Trim** Type 316 stainless steel is the standard for all internal components in Val-Matic Air Valves. Type 316 stainless steel provides the greatest protection from aggressive waters and hydrogen sulfide exposure in wastewater applications.

# Wastewater Air Valve Features & Benefits

Stainless Steel Body Seamless stainless steel bodies are lightweight and available for extreme service such as hydrogen sulfide, industrial chemicals or corrosive environments.



# Air Release Valves

## ■ Operational Highlights:

- Maintains system flow efficiency
- Releases unwanted air pockets during system operation
- Protects system against air related surges
- Fully complies with AWWA C512

## ■ Product Features:

- Unconditionally guaranteed stainless steel floats
- Stainless steel 316 internal trim
- Resilient seating for positive shutoff
- Performance proven for over 50 years
- Non-clog design minimizes need for backwashing

## ■ Optional Accessories:

- Vacuum check (prevents inflow of air)
- Outlet hood with screen (prevents debris from entering valves)
- Ball and plug isolation valves (allows valve maintenance)
- Inflow Preventer on outlet (stops flood water and resulting contamination from entering pipeline)



# Air/Vacuum Valves

## ■ Operational Highlights:

- Exhausts large quantities of air at system start-up
- Provides pipeline vacuum protection
- Responds to loss of pressure during power failures, line breaks and intentional drainage
- Fully complies with AWWA C512

## ■ Product Features:

- Unconditionally guaranteed stainless steel floats
- Stainless steel 316 internal trim
- Exclusive high/low pressure resilient seating
- Full pipe size inlets and outlets provide maximum protection
- Non-clog design minimizes need for backwashing

## ■ Optional Accessories:

- Outlet hood with screen (prevents debris from entering valves)
- Flanged outlets on sizes 8 inch & smaller
- Ball and plug isolation valves (allows valve maintenance)
- Inflow Preventer on outlet (stops flood water and resulting contamination from entering pipeline)
- Backwash kit (for severe wastewater applications)





# Combination Air Valves

## ■ Operational Highlights:

- Provides the functions of both Air Release and Air/Vacuum Valves
- Exhausts large quantities of air at system start-up
- Releases air pockets during system operation
- Provides pipeline vacuum protection
- Fully complies with AWWA C512

## ■ Product Features:

- Single body incorporates both features within one valve – More compact and economical
- Dual body consists of two independent valves – Allows individual maintenance while still protecting the pipeline – Wider range of sizing options
- Inlets and outlets are equal to full nominal size
- Unconditionally guaranteed stainless steel floats
- Stainless steel 316 internal trim
- Non-clog design minimizes need for backwashing
- Exclusive high/low pressure resilient seating

## ■ Optional Accessories:

- Outlet hood with screen (prevents debris from entering valves)
- Ball, plug and butterfly isolation valves (allows valve maintenance)
- Inflow Preventer on outlet (stops flood water and resulting contamination from entering pipeline)
- Backwash kit (for severe wastewater applications)



# Surge-Suppression Air Valves

## ■ Operational Highlights:

- Provides full vacuum protection for the pipeline
- Provides slow closure suppressing surge in the pipeline
- Minimizes water blow-by during Air Valve closure
- Allows the use of smaller valve size by utilizing a maximum sizing differential pressure of 5 psig
- Releases entrained air while pipeline is operating to maintain pumping efficiency
- Includes Regulated Exhaust Device (RED)
- Fully complies with AWWA C512 and NSF 61

## ■ Surge-Suppression Air Valve Features:

- Restrictor disc provides regulated exhaust to limit secondary surges during column separation
- Ability to adjust air exhaust for greater surge suppression
- Provides full vacuum flow port

## ■ Optional Accessories:

- Outlet hood with screen (prevents debris from entering valves)
- Ball and butterfly isolation valves (allows valve maintenance)
- Inflow Preventer on outlet (stops flood water and resulting contamination from entering pipeline)
- Backwash kit (for severe wastewater applications)



# Air/Vacuum Valves For Vertical Pumps

## ■ Operational Highlights:

- Regulates the exhaust of air on pump start-up
- Admits air to protect pump and mechanical seals
- Protects against air-related surges on pump start-up
- Fully complies with AWWA C512

## ■ Product Features:

- Unconditionally guaranteed 316 stainless steel floats
- Inlets and outlets are equal to full nominal pipe area
- 1/2" - 3" equipped with Dual Port Throttling Device
- 4" and larger equipped with Regulated-Exhaust Device mounted on the inlet

## ■ Dual Port Throttling Device (DPT):

- Adjustable discharge outlet provides regulated air exhaust
- Allows air to enter the system on pump shut down through an unrestricted independent vacuum port

## ■ Regulated-Exhaust Device (RED):

- Restrictor disc provides regulated exhaust to limit pump column surges
- Ability to adjust air exhaust for greater surge suppression
- Provides full vacuum flow port



# Vacuum Breaker Valves

## ■ Operational Highlights:

- Provides vacuum protection for pipelines and tanks
- Cushions surges related to column separation
- Opens in response to a 0.25 psi vacuum

## ■ Product Features:

- Resilient seals provide drop tight seating
- Full flow areas provide maximum vacuum protection

## ■ Optional Accessories:

- Hood with screen (prevents debris from entering valves)
- Air Release Valve (slowly releases air to prevent violent rejoining of water columns)
- Inflow Preventer on outlet (stops flood water and resulting contamination from entering pipeline)



# Vacuum Priming Valves

## ■ Operational Highlights:

- Allows the extraction of air from the pump housing and suction piping
- Float rises and closes the priming valve to prevent fluid from flowing into the vacuum priming system
- Continues to release air while the pump is running

## ■ Product Features:

- Specifically designed to prevent fluid leakage
- Flow sensitive float
- Stainless steel 316 internal trim and float

## ■ Optional Accessories:

- Water Level Control Switch (Mercury-Free)



# FloodSafe® Inflow Preventer

## ■ Operational Highlights:

- Piped to an outlet for an air valve
- Protects potable water systems from flooding and malicious contamination
- Field testing capability
- Low pressure shut off
- Dual float checks for added protection
- Fully complies with AWWA C514 and the Ten State Standards for Water Works

## ■ Product Features:

- Cross contamination control
- Adaptable to existing air valve installations
- Dual chamber design with upper chamber as a back up
- Dual float checks designed to assure rapid closure upon the entry of fluid into the chamber.
- Patented resilient seats are specially designed and formulated to assure drop tight closure at low pressures.
- Test ports allow for independent testing of both chambers
- Basket screen prevents debris from entering
- Port sized cover to allow for full venting capacity of air valve or vent

## ■ Optional Accessories:

- Field test kit
- Wall bracket



# FrostSafe® Two-Way Damper

## ■ Operational Highlights:

- Wafer style bidirectional hingeless damper
- Installed in vent piping
- Protects air valve from freezing
- Minimizes the flow of cold air into vaults through vent pipes
- Provides 100% flow area
- 100% corrosion resistant construction
- Allows Air Valves to function at full rated capacity

## ■ Product Features:

- High density polyethylene body
- Damper seal
- Adaptable to existing vent pipes
- Wafer design minimizes space requirements



# VentSafe® Security Cage

## ■ Operational Highlights:

- Installed in vault or reservoir vent pipes
- Helps prevent bugs, birds and small animals from nesting in vent pipes
- Helps prevent malicious introduction of liquids and other matter
- Provides 100% flow area
- 100% corrosion resistant construction

## ■ Product Features:

- Flow area equal to 100% of pipe area
- Adapts to existing vent pipes
- Wafer design minimizes space requirements
- 24 mesh screen complies with USEPA and Ten State Standard requirements for tank vent lines



# Air Valve Sizing Software

The Val-Matic Air Valve Sizing program is an easy to use, indispensable web based program that allows engineers to more effectively and efficiently design their water and wastewater piping systems.





**GEPICO**

A Leading supplier and manufacturer of high quality and cost-effective Wire & Cable Management products based in the Middle east.

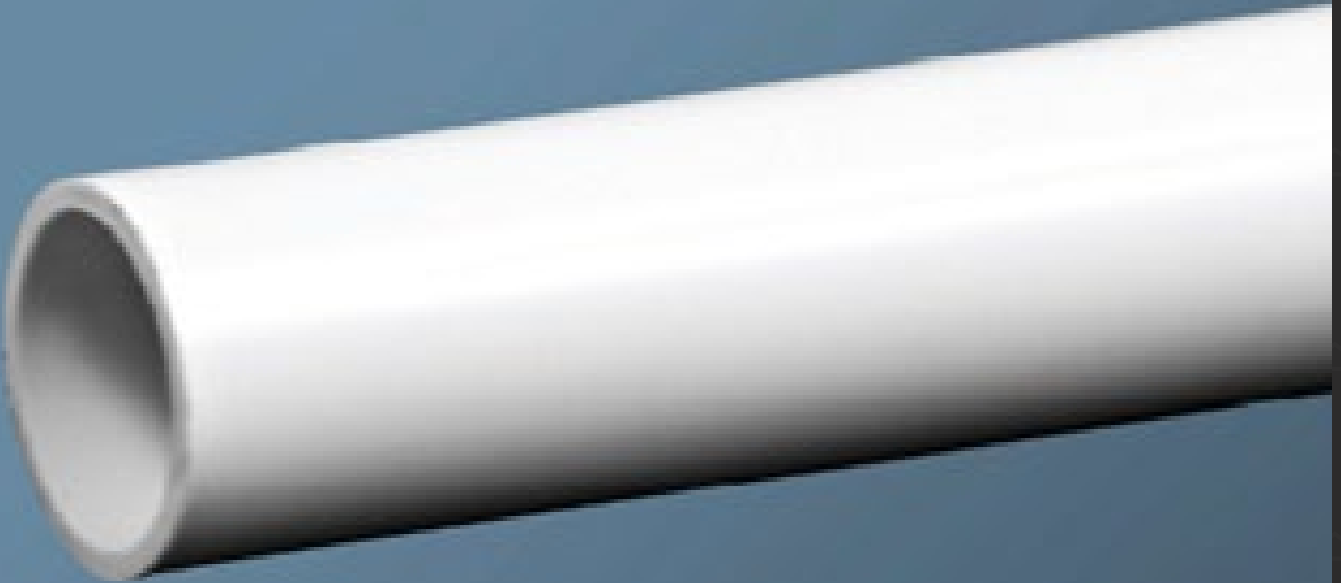
Gulf Technical Industrial Establishment (GEPICO) has been supplying wire and cable management products for nearly 25 years, we have grown with our partners to become one of the leading brands and manufacturers in the Middle East. We have constantly strived to offer our customers and partners the very best of Quality, Delivery, Service, Price, Product Range and Value, with every year witnessing larger strides in each.

MADE IN JORDAN > (09:12PM  
13.07.03)

GEPICO UPVC

## **GEPICO UPVC CONDUITS.**

**High Impact UPVC conduits are built to be rigid, bendable and with excellent electrical insulation properties. These conduits give excellent protection for electrical wires and cables and do not promote combustion or flame propagation.**



## Gepico Upvc Trunks.



GEPICO UPVC Trunking is suitable for any renovation, rewiring and external wiring needs, they can be found today in the offices of large corporations as well as in small private homes. These trunks are suitable for enclosing and protecting power, telecommunication and network wires and cables.



Manufactured from our special proprietary UPVC formulations, these trunks are of high impact strength and are easy to handle and install due to their light weight. Our Trunking systems are non corrosive and non conductive. These trunks are made to withstand the test of time.



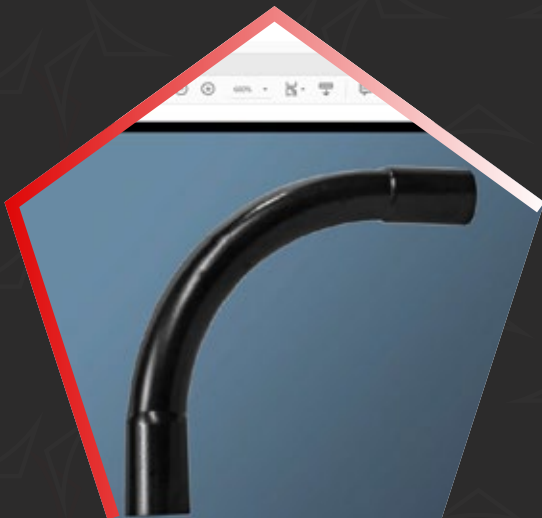
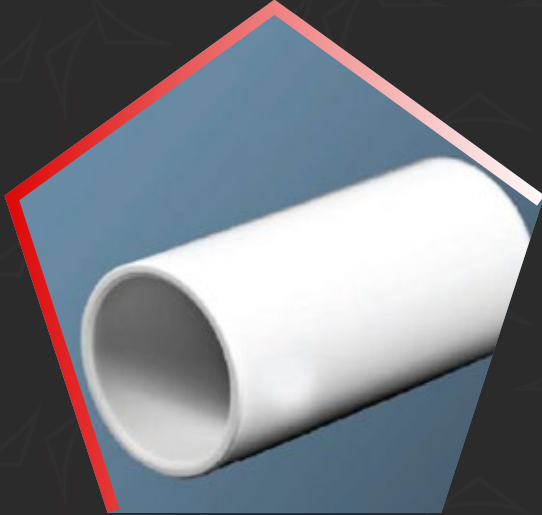
# Corrugated Conduits



GEPICO Corrugated Conduits are designed to maintain their cross-sectional dimensions while at the same time, be extremely flexible. These conduits are suitable for applications where there is a possibility of movement (eg. Vibration) or when rigid piping is too difficult to install.



# Gepico Fittings



# Circular Boxes



EXPANTION RING



LOOP BOX WITH COUPLER



ONE WAY (TERMINAL) BOX



ANGLE WAY BOX



CIRCULAR BOX COVER



THREE WAY BOX

# Outlet Boxes



ITALIAN SIZE OUTLET BOX



7 X 14 FLUSH BOX (2 GANG)



7 X 7 FLUSH BOX (1 GANG)

## Dry Wall Boxes

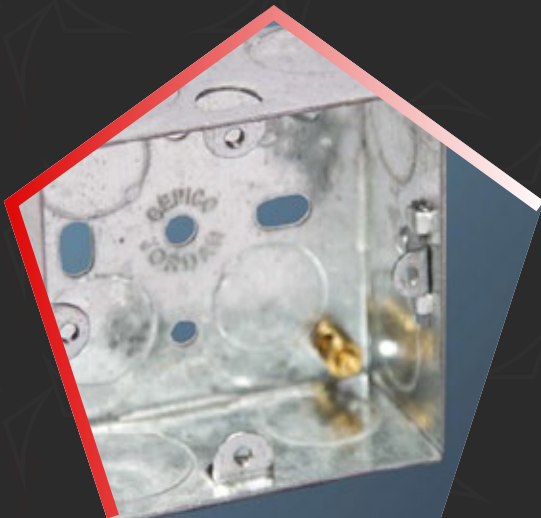


GANG SHALLOW D.W. BOX



CIRCULAR DRY WALL BOX

## Outlet Boxes



ONE GANG G.I. BOX



TWO GANG G.I. BOX



# Gepico Accessories



WARNING TAPE



NYLON CABLE PULLER



METAL CABLE PULLER



SOLVENT CEMENT



## Our Clints

**AMANA.**  
CONTRACTING

MA'ADEN  مَعَادِن

  
Al-Futtaim engineering

 شركة بيمكو العربية للمقاولات  
ARABIAN BEMCO CONTRACTING CO.

  
مجموعة بن لادن السعودية  
SAUDI BINLADIN GROUP

**Zamil**  
Projects

 السيف مهندسون مقاولون  
EL SEIF Engineering Contracting

**I CAD**  
المقاولون المبتكرون للمعايير المتطورة  
INNOVATIVE CONTRACTORS for ADVANCED DIMENSIONS

Nesma  نسما  
& Partners وشركائهم

  
BACS - RIYADH METRO PROJECT

  
المباني  
almabani

 SAWACO  
WATER DESALINATION

مرافق  
MARAFIQ

  
المؤسسة العامة لتحويل المياه المالحة  
Sulwa Water Conversion Corporation (SWCC)

 CONTRACT  
WATTS

 First Fix  
The Fundamental Installation for electric work

سامرف  
Samref 

 البواني  
AL BAWANI

الجفالي  
Juffali 

 VEOLIA

WETICO  
water & environment  
  
W  
WETICO  
مياه وبيئة



## Contact Info

**MODERN ARAB ENTERPRISES Co. Ltd.**



Mae@mae.com.sa

Operations@mae.com.sa

Tel +966 12 699 1226 Fax +966 12 694 9937

Wasel 7126 Block No. 654 Jeddah - 23615 - 5365

P.O. Box 5952 Jeddah 21432 Saudi Arabia

C.R. 4030120951 / Membership No. 63188

